

Design Narrative For Elk Stream Ranch Portal

Philip Walters May 1, 2017

Requirements:

For safety, structural elements will be steel. Wood will only be used in a decorative manner due to past poor experience with wood rot, and the hazard of falling structure over a common roadway.

Overhead clearance will be 15 foot minimum to comply with various DOT requirements.

Elimination of encroachments on neighboring subdivision- The previous portal was actually constructed outside of Elk Stream Ranch, and encroached on the access easement of Elk Springs Lot 12. The new location (shown in green on the Plan view) eliminates this encroachment. (the part of the portal and gate hardware that is east of the Elk Stream Boundary is within Elk Stream's access easement, so that is not an encroachment) Our electrical meter also encroaches in the Lot 12 access easement, and is built on a wooden frame that will someday fail anyway, so it should be replaced with a standard Empire Electric metal meter pedestal. (Shown in orange on plan view)

WARNING TO CONTRACTORS- There is a significant amount of buried electrical in this area, both that associated with the gate and the electric utility and telephone utility cables. In the area where the new portal post foundations will be located, the area on the west side may be close to the utility cables, which should be located by the utilities, and the area on the east side is likely to encroach upon some of the gate electrical, which should be uncovered by hand.

The Gate Swing will probably need to be adjusted so that it does not collide with the new portal posts. Philip Walters can make this adjustment.

The Meter relocation should be handled AFTER all the construction associated with the new Portal is completed. Philip Walters will coordinate.

Drawings:

Elk Stream Gate Area Plan View- showing general locations of improvements

Elk Stream Gate Portal Elevation- showing finished concept looking South

Elk Stream Gate Portal Structural Elevation- Showing structural elements only

Section "A" – view through portal post looking down

Elk Stream Gate Portal Elevation (looking South)

Sloping cuts at top slightly staggered

Notch fine to fit around pipe

5" OD drill pipe

Bevel end and close with welded plate

~15'

ELK STREAM RANCH

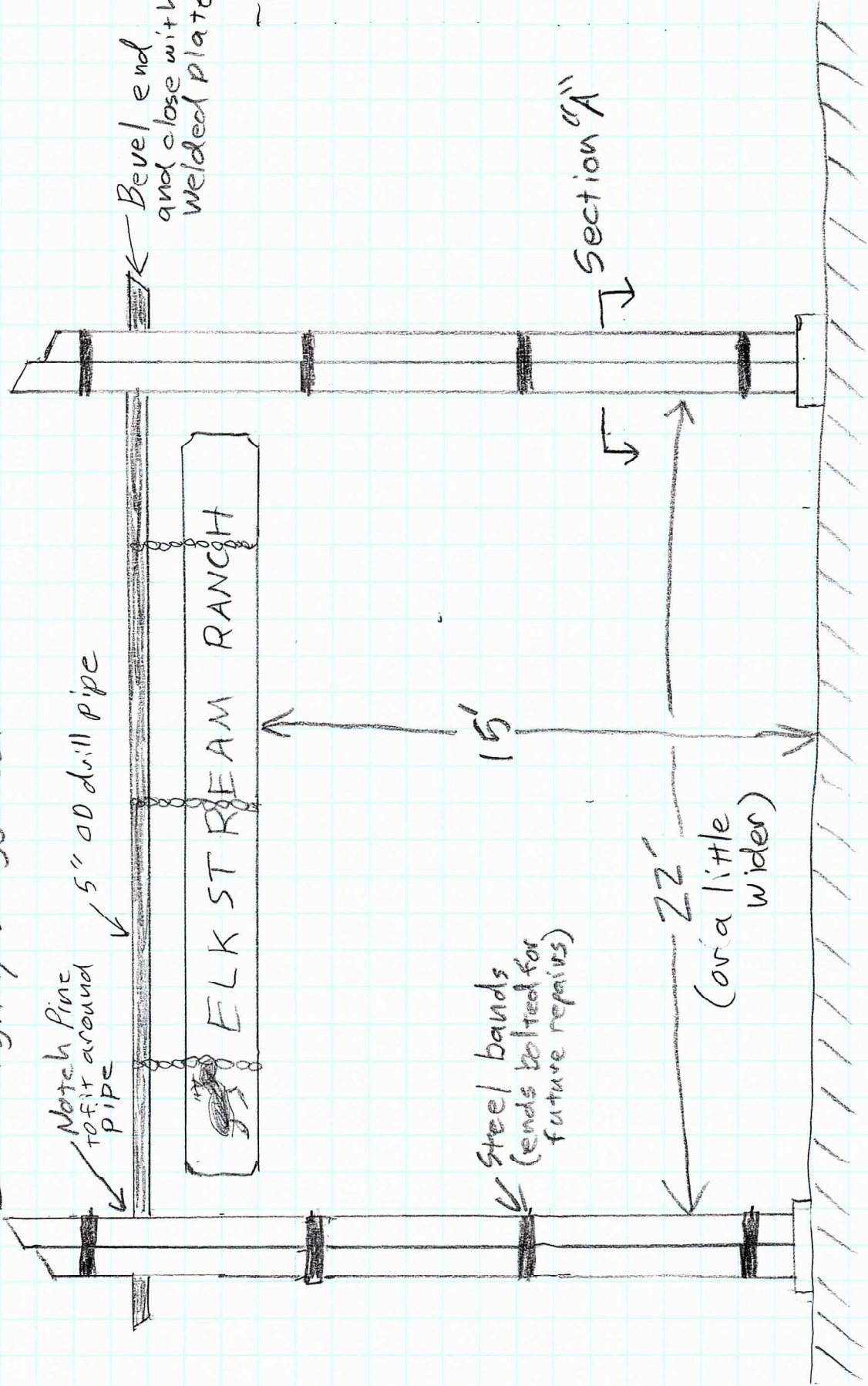
Steel bands (ends bolted for future repairs)

Section "A"

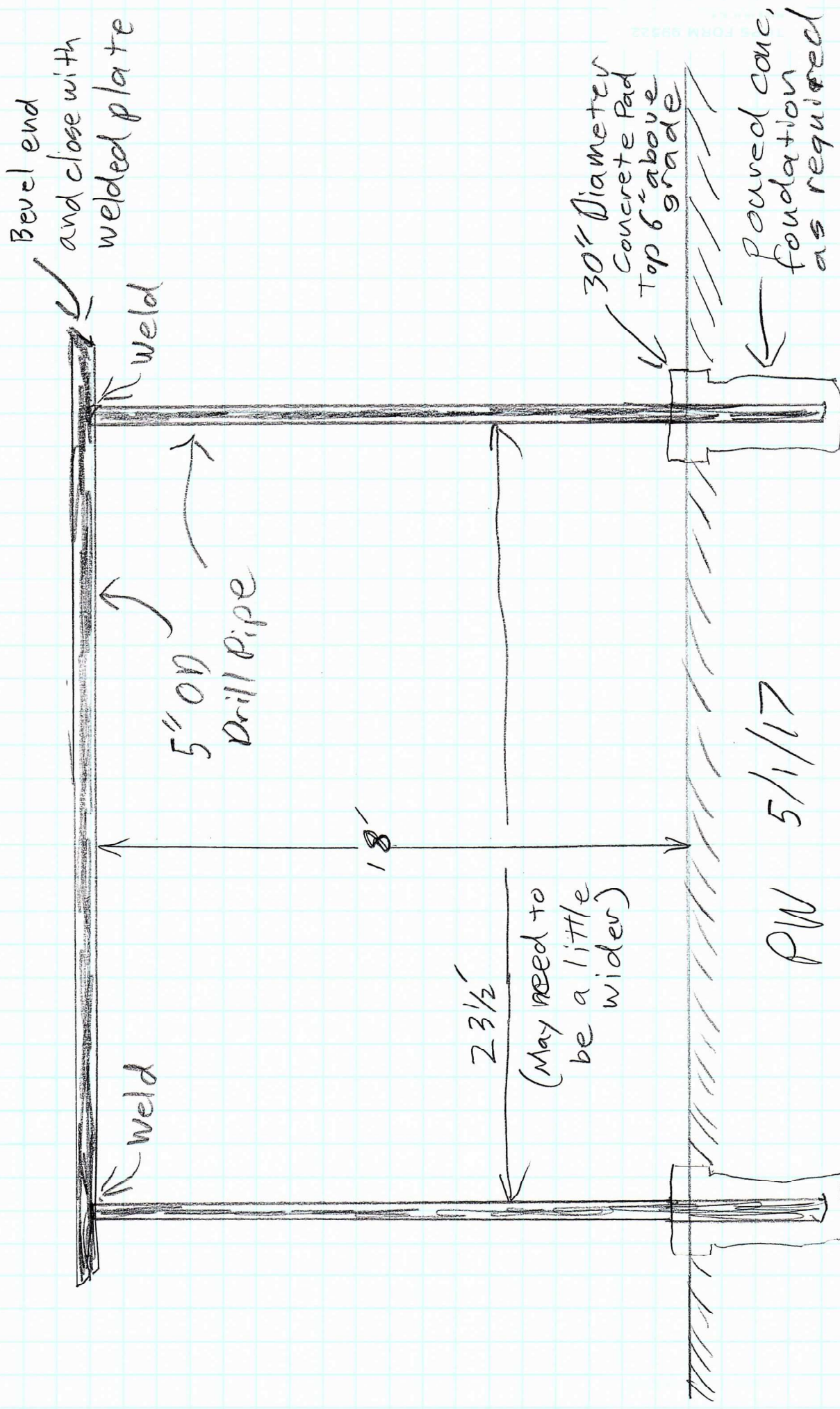
22' (or a little wider)

1'

PW 5/1/17

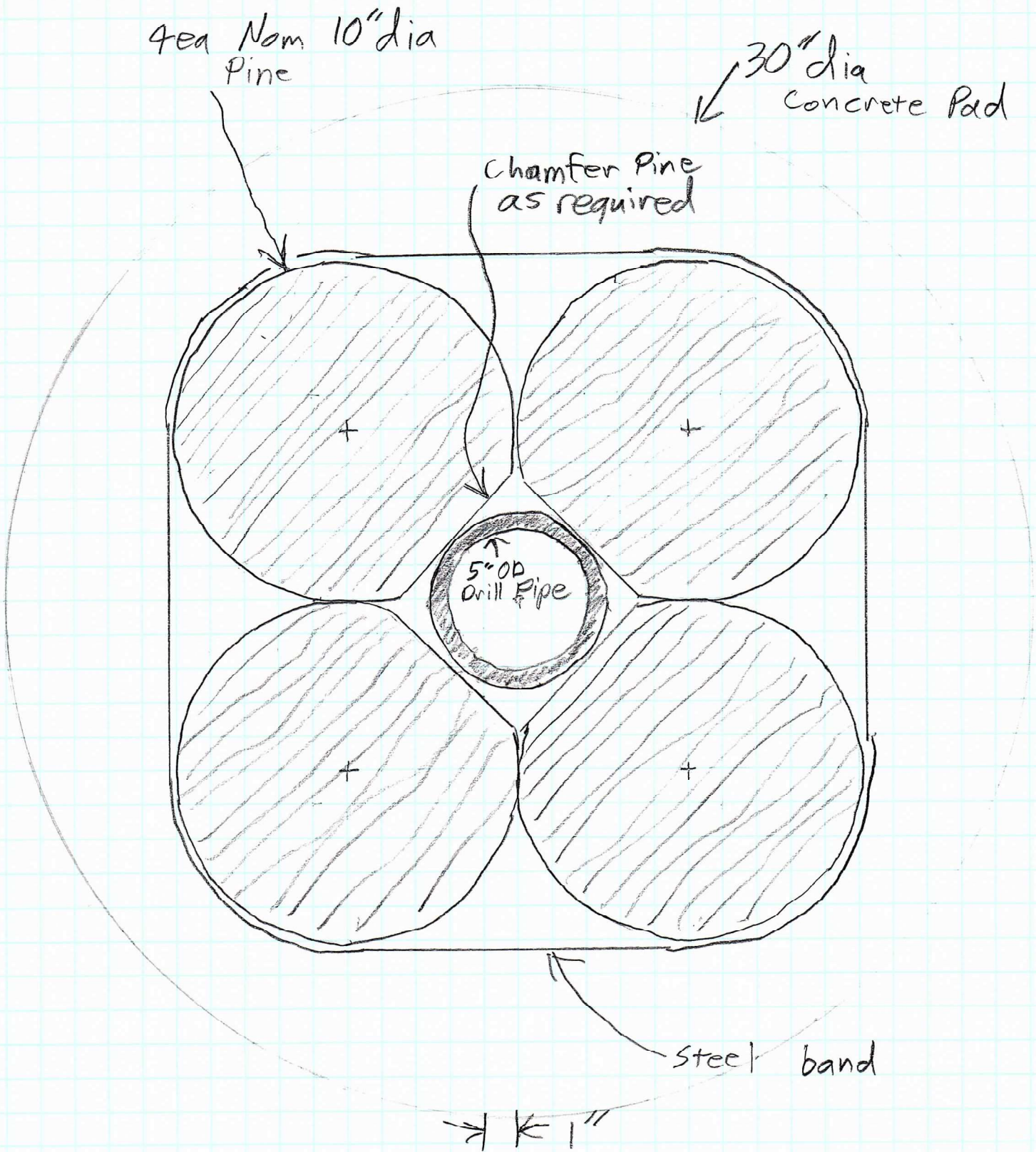


Elk Stream Gate Portal Structural Elevation



PW 5/1/17

Section "A" Looking Down



Elk Stream Gate Portal

PW
5/1/17